

SCIENTIFIC and TECHNOLGY PUBLICATIONS

By

Alexander Robertson M. Sc., D. Phil (Oxon)

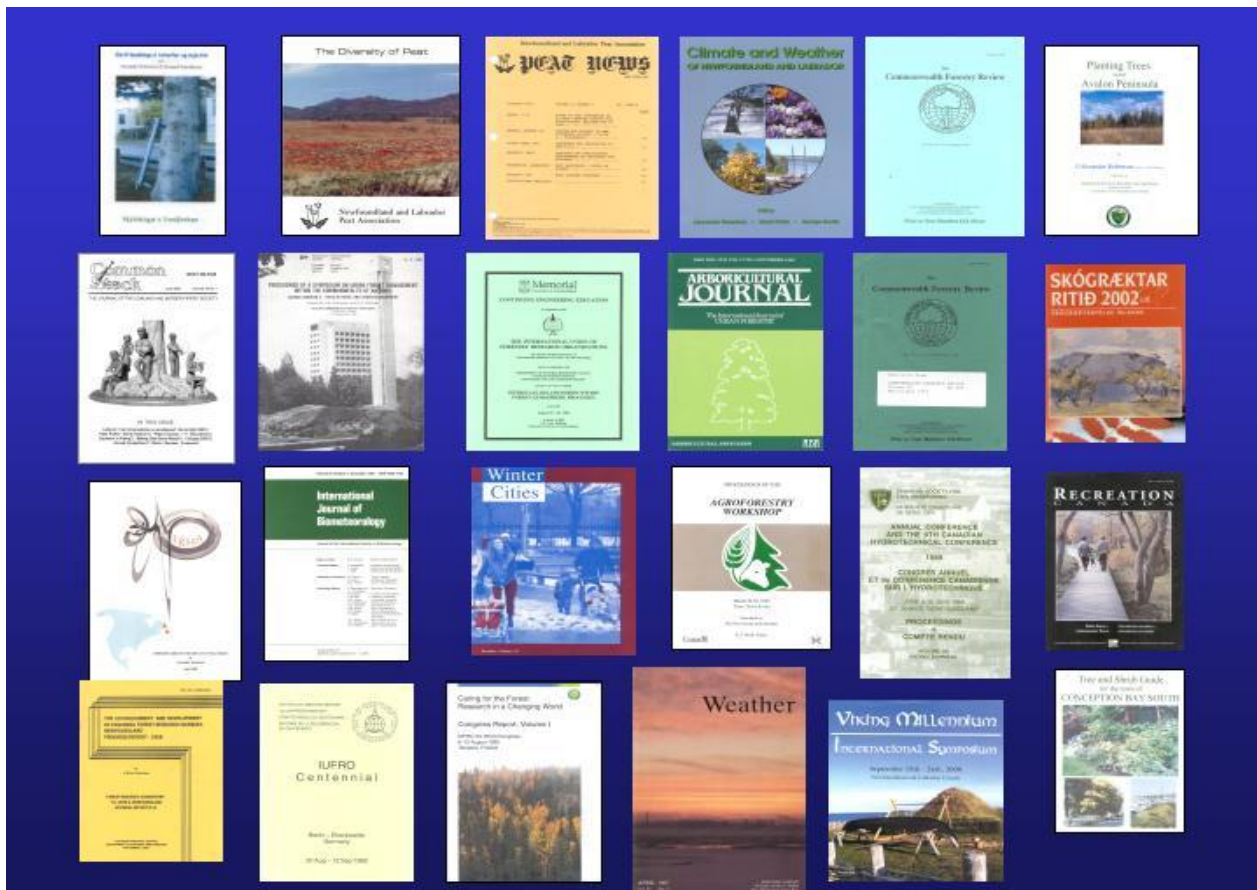
&

Colleagues



John Maunder

Carex Saxilitoralis A. Robertson, Rhodora 82: 369-374. 1980





Wood Carving of Mt. Esja, Iceland by Alexander Robertson for modeling wind flow on and around Mt. Esja



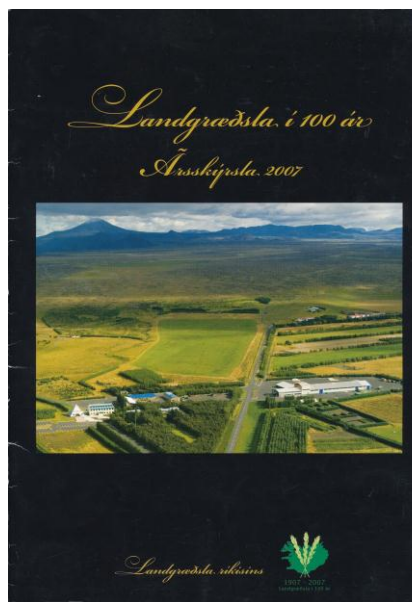
ROB ROY WOODCARVING
By
Alexander Robertson

A bi-centennial commemoration of the publication of the novel *ROB ROY* by Sir Walter Scott published in 1817



LADY OF THE LAKE

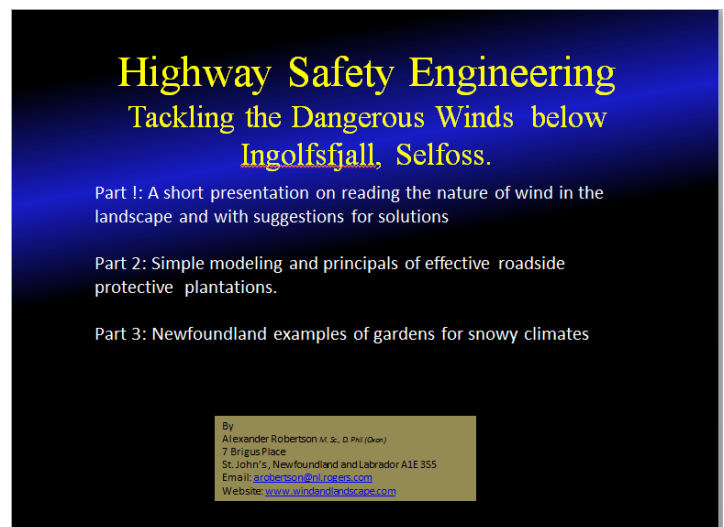
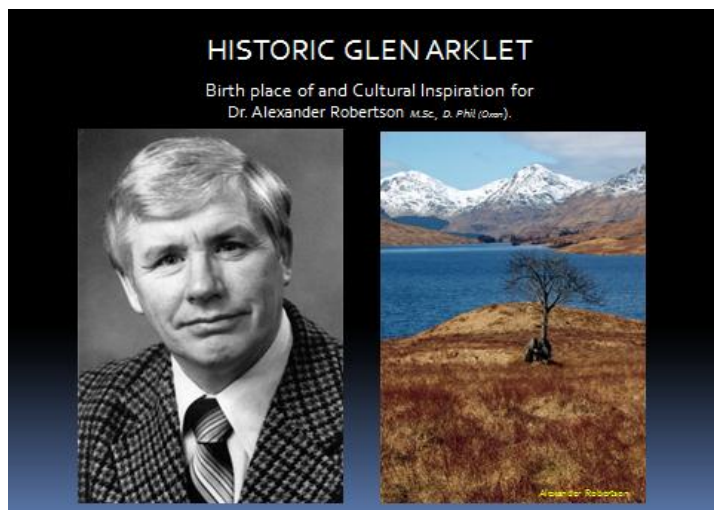
Carved by Alexander Robertson as a contribution to the bicentennial of the publication of
of
Sir Walter Scott's epic poem *Lady of the Lake* in 1810



Grjóttgarðar í landgræðslu á Íslandi



Landgræðsla ríkisins 2008
Lr 2008/05



PUBLICATIONS IN THE QUEEN ELIZABETH II LIBRARY,
MEMORIAL UNIVERSITY OF NEWFOUNDLAND & LABRADOR
www.mun.ca/library

SD 390.6 I2 R6 2002

Vindar & tré

Alexander Robertson and Sæmunder Kr. Þorvaldsson þyd. Magnus Rafasson.
Skjölaskógar á Vestfjörðum, Þingyeri, Iceland, 2002 (in Icelandic)

SD 390.6 I2 R6 2002

Áhrif landslags á vedurfar og trjávöxt

Alexander Robertson & Sæmunder Þorvaldsson.

Skjölaskógar á Vestfjörðum, Þingyeri, Iceland, 2002 (in Icelandic)

SD 390.6 I2 R6 2002

Assessing the landscape for actual and potential effects of weather on trees

Alexander Robertson and Sæmunder Þorvaldsson.

Skjölaskógar á Vestfjörðum, Þingyeri, Iceland, 2002

SD 146 N4 R57 2000

Planting trees on the Avalon Peninsula

Robertson, Alexander, Government of

Newfoundland and Labrador, Department of Forest Resources and
Agrifoods, Forestry, Wildlife and Inland Fish Branch.

QK 938 M3 R58 2000

*Flora of peatland ecosystems in Newfoundland and Labrador and the
French Islands of St. Pierre and Miquelon [computer file] / written &
illustrated by Alexander Robertson.*

QK 587.7 N4 R62 1998

*The boreal felt lichen (Erioderma pedicellatum (Hue) P.M.Jorg.) in
Newfoundland : geographical distribution and dynamics of its habitats in
forested landscapes / by Alexander Robertson for Government of
Newfoundland and Labrador, Department of Forest Resources and
Agrifoods, Forestry, Wildlife and Inland Fish Branch.*

Shelved by title

*Research on forest environmental influences in a changing world / Guest
editor: Alexander Robertson. Agricultural and Forest Meteorology, 84:xiii-xvi (1994)*

SD 390.7 W56 R62 1995

*The problem with chaos in wind and forest relationships : from a forester's
viewpoint / Alexander Robertson.*

QK 495 C997 R61 1995

Carex of Newfoundland / by Alexander Robertson.

SB 435.6 N42 T73 1994

Tree and shrub guide for the City of Mount Pearl. Illustrated poster by A. Robertson

QK 938 F6 R63 1994

Radiation, sensible, latent and soil heat fluxes over clearcut and planted forest sites in Newfoundland / Alexander Robertson

SD 410.38 F67 1993

Forest development in cold climates / edited by John Alden, J. Louise Mastrantonio, and Søren Ødum. Alden, John. NATO Advanced Research Workshop, Iceland containing the following papers pertaining to Newfoundland by Alexander Robertson

a) *Effects of wind on boreal forests*

b) *Wind and Wave Forests: a case study and implications for silviculture*

c) *Long-term biometeorological monitoring at two forest sites in Iceland and Newfoundland*

QC 985.5 N4 C54 1993

Climate and weather of Newfoundland and Labrador / editors A. Robertson, Stuart Porter, George Brodie.

SD 387 C68 R63

Biomass production and use for energy, feed and silvichemicals / A. Robertson.

MICRO FICHE 2268

The impact of wind on a balsam fir wave forest at Spirit Cove, Newfoundland [microform] / Doctor of Philosophy Thesis, University of Oxford, Alexander Wood Robertson.

SD 536.6 N4 C66 1988

The Competitive position of fuelwood from proposed energy plantations in Newfoundland / D. Fletcher & Associates; Scientific authority: Alexander Robertson; Project leader: Boreal Energy Plantation R. & D.

SD 390.7 W56 R6 1987

The impact of wind on a balsam fir wave forest at Spirit Cove, Newfoundland / by Alexander Wood Robertson.

SD 536.6 N4 R63 FILE

Boreal energy plantation R & D with Salix species / Alexander Robertson.

MICRO FICHE MICROLOG 85-2821

An introduction to European willows [microform] / by Alexander Robertson. --

MICRO FICHE MICROLOG 85-0710

Carex of Newfoundland [microform] / Alexander Robertson. --

QK 495 S16 R64

An introduction to European willows / by Alexander Robertson. --

FO42- 1084

Conifers for biomass production - Volume I&II / M.A.K. Khalil, A.W. Robertson.

Thesis-Request by author's name & title

Tamarack (Larix laricina (Du Roi) K. Koch) as a biological indicator of wind / by Alexander Wood Robertson. --

QK 495 C997 R61

Carex of Newfoundland / Alexander Robertson.

SB 436 R63

Urban vegetation management in Newfoundland. Proceeding 11th Commonwealth Forestry Conference, Trinidad/Tobago (1980) / A. Robertson & B. Wood.

PN 1992.6 R65 1980

Commentaries on the impact of television / by Alexander Robertson.

QH 106.2 L2 R6 1980

Palsa bogs, sand dunes and salt marshes : environmentally sensitive habitats in the coastal region southeastern Labrador / by B.A. Roberts and A.W. Robertson.

S 592.85 D58

The diversity of peat / Newfoundland and Labrador Peat association. compiled and edited by F.C. Pollett, A.F. Rayment and Alexander Robertson.

TJ 859 R6

Water powered sawmills in Newfoundland / written and illustrated by Alexander Robertson. --

QE 938 N4 R65

Peatlands and archaeology : with special reference to the Norse site at L'Anse Aux Meadows / by Alexander Robertson.

QE 938 N4 R6 1978

Chemical-analytical investigations of the archeaological site at L'Anse aux Meadows national historic site / by Alexander Robertson. --

QK 77 N48 R63 1976

Plantae exsiccatae in Herbario Terra Nova Sylva Investigatio Institutum, St. John's, Newfoundland / by Alexander Robertson.

T 65.3 R6 1975

Directory of technical colleges in Canada/ by Alexander W. Robertson. Robertson, Alexander,

QK 495 C997 R65 1974

Illustrated key to Carices in Newfoundland; based on floral structure / by Alexander W. Robertson and Frederick C. Pollett.

QK 203 N4 M46

The classification and interpretation of the vegetation resource within L'Anse aux Meadows National Historic Park / by W.J. Meades, F.C. Pollett and A.W. Robertson. --

QK 495 C997 R65 1974B

Illustrated key to Carices in Newfoundland : based on floral structures / by Alexander W. Robertson and Frederick C. Pollett.

QK 495 C997 R62 1973

Checklist of the genus Carex in Newfoundland / by A.W. Robertson and F.C. Pollett.

SB 435 R6 FILE

Checklist of ornamental trees and shrubs in the gardens of Corner Brook House / by Alexander W. Robertson.

SD 401 R6

The establishment and development of Pasadena Forest Research Nursery, Newfoundland : progress report, 1968 / A. Robertson. --

G 3436 D2 19-- R6

Phytogeographic map of Newfoundland / by Alexander Robertson.

CNS PERIODICAL v. 1- 1979-

Peat News. Journal of the Newfoundland and Labrador Peat Association. [St. John's]/Founding Editor Alexander Robertson.

SELECTED LIST OF SCIENTIFIC and TECHNICAL PAPERS

By Alexander Robertson M. Sc., D. Phil (Oxon)

Alexander Robertson, Notes for a tour of the Scottish Highlands Oct. 2011, Skógræktarfélag Íslands 227pp, illust.

Alexander Robertson and Einar Gunnarson, Study of the Winds of Mount Esja, Iceland 2010

Alexander Robertson Notes on Lady of Lake Woodcarving 2010 www.windandlandscape.com

Alexander Robertson, Notes on Rob Roy Woodcarving. 2009 www.windandlandscape.com

Alexander Robertson, Sveinn Runólfsson and Ingvi Þorsteinsson. Grjótgarðar I landgræðslu á Íslandi *Stone Walls for Soil Conservation. Landgræsla ríkisins Íslandi (Iceland Soil Conservation Service) 2008*

Alexander Robertson *Wind Reader* (Translated to Icelandic by Ingvi Þorsteinsson & Sveinn Runólfsson) 2008

Alexander Robertson, *Strathard Landscapes* . 2008 www.windandlandscape.com

Alexander Robertson, *Landscape & Forestry in Iceland*. Guest Lecture, Iceland Forestry Association Annual General Meeting. 2005

Alexander Robertson, Auður Sveinnsdóttir, Sveinn Runólfsson and Skuli Lyðsson. *Landscape & Shelterwood: Tackling the Ubiquitous Wind*. Conference, Afforestation in Nordic Countries; Nordic Council of Ministers, Reykhól, Iceland. 2005

Alexander Robertson *Landscape Architecture & shelter Woodlands*. Guest Lecture, Seminar on Architecture and Forestry sponsored by the Iceland Architects Association, Iceland Landscape Architects Association, Iceland Forest Service, Soil Conservation Service, and the Agricultural University of Iceland (Hvanneyri) Reykjavik, Sept. 2004

Alexander Robertson and Þröstur Eysteinnsson. *Community Forestry in Iceland*. Paper Canadian Institute of Forestry, Newfoundland & Labrador Section Annual General Meeting. St. John's, Oct. 2003

Alexander Robertson and Þröstur Eysteinnsson. Íslenska fléttan. *Skógræktarríðið* 2002 2.tbl :91-95

Alexander Robertson and Sæmundur Þorvaldsson. *Áhrif landslags á verðurfar og trjávöxt (Assessing the Landscape for Actual and Potential Effects of Weather on Trees)*. Compact Disc "Vindar & Tré" produced by Skjölaskógar á Vestfjörðum, (Shelter Woodlands for the Westfjords), Þingeyri, Iceland, 2002 (in Icelandic)

Alexander Robertson *The Physical Environmental Approach to reforestation of man-made barrens: Forestry Beyond the Timberline Workshop: Ecological and Socio-economic Factors Affecting Forestry in the Context of Rural Development in the North Atlantic Region*. Akureyri, Iceland (June, 2000). *Skógræktarríðið* 2001 1.tbl (Icelandic Forestry 2001 No. 1)

Alexander Robertson. *Markland's (Labrador) Forests* Part 1 of a Paper Read at the Viking Millennium Symposium Labrador Straits Sessions, September 23rd 2000

Alexander Robertson. *Botanical-chemical Analysis of Peat Monoliths from the Archaeological Site at L'anse Aux Meadows National Historic Site. Part 2 of a Paper Read at the Viking Millennium Symposium Labrador Straits Sessions, September 23rd 2000*

Alexander Robertson. *Radiation, sensible, latent and soil heat fluxes over clearcut and planted areas in Newfoundland and Iceland. Proc. 9th Hydrotechnical Conf., St. John's, (1994)*

Alexander Robertson. *Contributions to Newfoundland Climatology. Proc. Workshop on Climate Change and Variability in Atlantic Canada, Environment Canada, Halifax (1996)*

J. McCaughey, B. Amiro, A. Robertson, D. Spittlehouse. *The Surface Climates of Canada: Forest Environments. McGill University Press (1997)*

Alexander Robertson. *Applied Climatology: Principles and Practices: chapter 17, Forestry Routledge (1997)*

Alexander Robertson. *Some effects of wind on northern forests in a changing climate. Commonwealth Forestry Review 70:47-55 (1991)*

Alexander Robertson. *Burn's Day Storm, Jan 25th, 1990: a catastrophe for European Forestry. (1991)*

Alexander Robertson. *The role of wind in landscape ecology. Oak Ridge National Lab., Tennessee (1993)*

Alexander Robertson. *Tré og vindur. Arskriti Skógræktarfelags (1989) (In Icelandic)*

Alexander Robertson. *Effects of wind on the boreal forest. Proceedings, International Union of Forestry Research Organizations, Centennial Meeting, Eberswald, Berlin, Germany (1992)*

Alexander Robertson. *Resources and environmental management: people and forestry (Part 1. The intransigence of linear thinking and thinking complexity; Part 2. Uncertainty, conflict and implications) MUN Geography Lecture (1997)*

Alexander Robertson. *Forests and global climate change: fractals, chaos and directional data - first principles of complexity. MUN Engineering & Applied Science Lecture (1996)*

Alexander Robertson. *The centroid of tree crowns as an indicator of biotic and abiotic processes in a balsam fir wave forest. Can. J. For. Res., 17:746-755 (1987)*

Alexander Robertson. *Directionality of compression wood in wave forest trees. Can. J. For. Res. 20:1143-1148 (1990)*

Alexander Robertson. *The centroid of wood density, bole eccentricity and tree ring width in relation to vector winds in wave forests. Can. J. For. Res. 21: 73-82 (1991)*

Alexander Robertson. *Directionality, fractals and chaos in wind-shaped forests. Agric. For. Meteorology 72:133-166 (1994)*

Alexander Robertson (Editor) *Interscale Relationships within Forest-Atmosphere Processes. Proceedings, International Union of Forestry Research Organizations Workshop at Memorial University of Newfoundland. St. John's (1994)*

Alexander Robertson and R. Luxmoore. *Interscale relationships, carbon and water budgets, and night-time warming of forests. Proc. International Union of Forestry Research Organizations workshop. St. John's (1994)*

Alexander Robertson. *Fractal and chaos analysis of forest responses to wind. International Union of Forestry Research Organizations Workshop at Memorial University. St. John's (1994)*

Alexander Robertson. *Using trees to study wind. Arboriculture 11:127-143 (1987)*

Alexander Robertson. *Estimating mean windflow in hilly terrain from tamarack (larch). Intern.J.Biometeorology 30:333-349 (1986)*

Alexander Robertson. *Application of circular statistics, fractal geometry, percolation and chaos theory to analysis of wind-forest interactions. International Union of Forestry Research Organizations, Centennial Meeting, Eberswald, Berlin,(1992)*

Alexander Robertson (Guest Editor) *Research on Forest Environmental Influences in a Changing World. Special Issue Agricultural and Forest Meteorology 84(1-2), (1997)*

A.Araddottir, H.Thorgeirsson, J.H.McCaughey, I.B.Strachan and Alexander Robertson. *Establishment of a black cottonwood plantation on an exposed site in Iceland: plant growth and site energy balance. Agric. For. Meteorology 84(1-9) (1997)*

A. Araddottir and Alexander Robertson. *Circular statistical analysis of birch colonization and the directional growth response of birch and black cottonwood in south Iceland. Agric.For. Meteorology 84: 179-186 (1997)*

M.Hampson and Alexander Robertson. *Distribution of fungal spores and fractal diversity of quadrats on membrane filters. J. Food Protection 58:1038-1047 (1995)*

Alexander Robertson. *Adaptation of natural ecosystems in harsh northern climates and their practical implications for cultivated landscapes: or the irrelevance of plant hardiness zonation maps. American Rhododendron Society, Annual Convention, Niagara Falls (1998)*

Alexander Robertson. *Birch and its role in disturbance: the problem with chaos and fractals. Proc. MAB Nordic Subarctic and Subalpine Birch Research Project. Iceland (1992)*

B.Roberts and Alexander.Robertson *Salt marshes in Atlantic Canada: their ecology and distribution. Can.J.Botany 64:455-467 (1986)*

Alexander Robertson. *The Genus Carex of Newfoundland. Government of Canada, 2nd edition 1994*

Alexander Robertson. *The Genus Carex of Newfoundland. Government of Canada, 1st edition 1984*

Alexander Robertson. *The history of the classification of the genus Carex. Taxon 28:539-548 (1979)*

Alexander Robertson. *A new species of carex (SECT:EXTENSAE) Rhodora 82:369-374 (1980)*

Alexander Robertson. *Salix for biomass energy and energy conservation.* **Proc. 4th Bioenergy R&D Seminar, Ottawa (1982)**

Alexander Robertson. *Boreal energy plantation R&D in Newfoundland.* **Proc. 6th International Workshop on Forestry Regeneration at High Latitudes, Edmunston, New Brunswick (1984)**

Alexander Robertson. *Biomass production and its use for energy, feed and silvichemicals.* **Proc. Nova Scotia Soils Research Institute, Truro (1993)**

Alexander Robertson. *Energy plantation research in Newfoundland.* **17th World Congress, International Union of Forestry Research Organizations, Ljubliana, Yugoslavia (1986)**

Alexander Robertson. *Climate and Weather of Newfoundland and Labrador: Beautiful living windbreaks.* **Creative publishers (1993)**

Alexander Robertson. *Climate and Weather of Newfoundland and Labrador: Forest climates.* **Creative Publishers (1993)**

Alexander Robertson and S. Porter. *Climate and Weather of Newfoundland and Labrador: Recreational climates.* **Creative Publishers (1993)**

Alexander Robertson. *Manipulating wind with trees and shrubs.* **Proc. 14th Annual Turfgrass Conference, Saint John (1993)**

Alexander Robertson. *Capturing the wind in urban forests.* **Recreation Canada 51: 14-17 (1994)**

Alexander Robertson. *Statagic plan for energy efficiency and alternative energy in Newfoundland.* **Dept. Environment, Government of Newfoundland and Labrador (1993)**

Alexander Robertson. *The problem with chaos in wind and forest relationships: from a forester's viewpoint.* **20th World Congress, International Union of Forestry Research Organizations, Tampere, Finland (1994)**

Alexander Robertson. *Teleforestry.* **17th World Congress, International Union of Forestry Research Organizations, Ljubliana, Yugoslavia (1986)**

Alexander Robertson. *Teleforestry:Utilizing television.* **Forestry Chronicle 62: 542-545 (1986)**

Alexander Robertson. *Teleconferencing in the marketplace.* **Eurocom '86, Amsterdam (1986)**

Alexander Robertson. *University College of North Wales Seminar Series: Foresters and the television media.* **Forestry Chronicle 62:333-349 (1986)**

Alexander Robertson. *Teleforestry:the application of videoconferencing to forestry.* **Forestry Chronicle 63:32-35 (1987)**

Alexander Robertson. **(Founding Editor PEAT NEWS; published by the Newfoundland and Labrador Peat Association. (1979-83)**

Alexander Robertson. *Peat as a source of Energy in Finland.* **Peat News 1(12):1-8 (1979)**

Alexander Robertson. *Peat Resources- focus on New Zealand.* **Peat News 2(1):14-22 (1980)**

Alexander Robertson. *CITIES and the international trade of rare and endangered peatland plants.* **Peat News 2(1):23-25 (1980)**

Alexander Robertson. *Diversity of Peat.* **Paper given at the Atlantic Regional Laboratory, National Research Council of Canada, Halifax, Nova Scotia. Peat News 2(2):1-11 (1980)**

Alexander Robertson. *Peat Resources- Focus on the United States of America.* **Peat News 2(2):23-42 (1980)**

Alexander Robertson. *New Wetland Classification System for North America.* **Peat News 2(3):1:28 (1980)**

Alexander Robertson. *Peat Resources-Focus on Poland.* **Peat News 2(4):1-17 (1980)**

V.Puustjarvi and Alexander Robertson. *Diversity of Peat: Physical and chemical properties of horticultural peat.* **Newfoundland & Labrador Peat Association (1977)**

Alexander Robertson (Editor). *Diversity of Peat: Checklist of the peatland flora of Newfoundland, Labrador and the French Islands of St. Pierre & Miquelon.* **Newfoundland & Labrador Peat Association (1977)**

Alexander Robertson *Flora of peatland ecosystems of Newfoundland, Labrador and St. Pierre and Miquelon*
CD 2000